

## AR Series Variable Displacement Piston Pumps

### AR16-FR01\*\*-22 AR22-FR01\*\*-22

#### Notice of Model Change

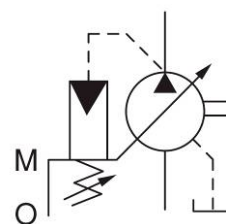
AR series variable displacement piston pumps have been highly regarded since their release, because of compactness, low noise, and high efficiency. The pumps have been remodeled while maintaining compactness, as described below.



#### [Description of Changes]

The housing material has been changed (aluminum -> cast iron). Accordingly, the product mass has increased from 9.8 kg to 12.1 kg.

#### Graphical Symbols



#### [Specifications]

Model Number	Geometric Displacement cm <sup>3</sup> /rev	Min. Adjustable Flow Rate cm <sup>3</sup> /rev	Operating Pressure MPa		Shaft Speed Range r/min		Approx. Mass kg
			Rated	Intermittent*1	Max.	Min.	
AR16-FR01**-22	15.8	6.0	16		1800	600	12.1
AR22-FR01**-22	22.2	8.5					

\*1 Whenever setting pressure, make sure that the full cut-off pressure never exceeds the maximum intermittent pressure.

#### [Model Number Designation]

AR16	-F	R	01	B	S	-22
Series Number	Mounting	Direction of Rotation	Control Type	Pressure Adj. Range MPa	Port Position	Design Number
AR16 (15.8 cm <sup>3</sup> /rev)	F: Flang Mtg.	[Viewed from Shaft End] *1	01: Pressure Compensator Type	B: 1.2 to 7 C: 2.0 to 16	None: Axial Port S: Side Port	22
AR22 (22.2 cm <sup>3</sup> /rev)		R: Clockwise				

\*1 The type with the counterclockwise direction of rotation (L) will be discontinued.

#### [Sales Material]

Model Number	Installation Drawing
AR16-FR01**-22	1302-PA315351-7
AR22-FR01**-22	1315-PA315353-3

#### [Timing of Release]

Orders will be accepted from April 2011.

#### [Compatibility]

No change has been made to the appearance and performance, except for the housing material change and the resultant mass change.

The exterior is treated with phosphoric acid anodic oxide coating.

#### [Application]

Machine tools, general industrial machinery, etc.